



# Airline De-Ice Plan 2025-2026

American Airlines 

 DELTA

jetBlue  
AIRWAYS®

  
SOUTHWEST™

**spirit**

**FRONTIER**  
AIRLINES

UNITED 





# Airline De-Ice Plan 2025-2026

## Table of Contents

• Glycol Fluid Reporting	PGS 2-5
• Deicing Truck Operations	PGS 6-9
• Deicing Operation Safety	PGS 10-12
• Allegiant Airlines Plan	PG 14
• American Airlines Plan	PG 15-16
• Breeze Airways Plan	PG 17
• Delta Airlines Plan	PG 18
• Frontier Airlines Plan	PG 19
• jetBlue Airways Plan	PG 20-21
• Southwest Airlines Plan	PG 22-23
• Spirit Airlines Plan	PG 24
• United Airlines Plan	PG 25
• East Ramp 1 Deicing Plan	PGS 26-27
• Deice Pad Spot 3	PG 28
• Deicing Vendor Contacts	PG 29



# RIC GENERAL DE-ICE PROVISIONS

•De-Ice reporting is **REQUIRED** per RIC Storm Water Discharge Permit!

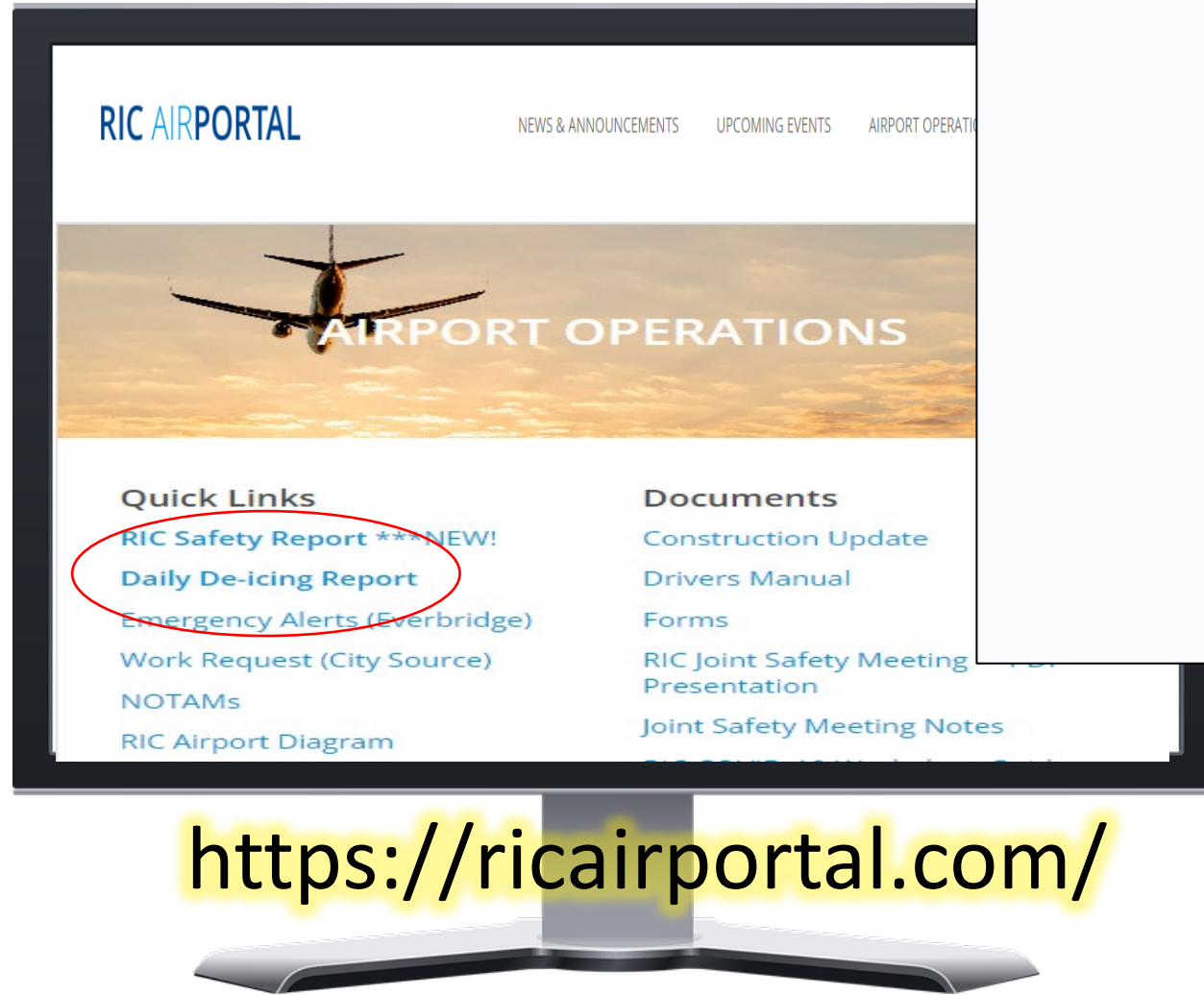
Out of plan de-icing locations must be approved in advance by Airport Operations.  
Airport **MUST** be notified of de-icing activity regardless of location for GRV pickup!

## DO NOT:

- Deice in movement areas (runways & taxiways)
- Deice in any common use locations such as uncontrolled taxi lanes that block other aircraft or tenant access
- To avoid ramp congestion, do not push aircraft or allow aircraft to de-ice unless they can immediately be de-iced or enter the de-ice location.



The “Daily De-icing Report” is linked at the Airport Operations website, [ricairportal.com](https://ricairportal.com)  
<https://app.aerosimple.com/forms/5debed6e-4fad-11ed-8289-0a58a9feac02/complete>



The screenshot shows the 'Daily De-icing Report' form in the AEROSIMPLE application. The form is titled 'Daily De-icing Report' and has a 'Back to Forms' link. The form fields include:

- Created by:
- \* Created date:
- Weather Conditions:
- Temperature:
- Wind conditions:
- \* Airline:
- \* De-ice vendor:
- Air Carrier Ramp:
- Cargo Ramp:
- East Side Ramps:
  - ☐ East Ramp 1 (DHL)
  - ☐ East Ramp 3
  - ☐ East Ramp 4

<https://ricairportal.com/>





**RICHMOND**  
INTERNATIONAL AIRPORT

Attention Airline OPS personnel:

Call Airport Communications

at (804) **226-0001**

to report start of deicing operations.

# Deicing Fluid Usage Reports – **END OF MONTH REPORT REQUIRED!**

<https://us.aerosimple.com/forms/4c85fc12-a26f-11ed-84b0-0a58a9feac02/complete>

**CRAC** Deicing reporting contacts, for forms and information:

## **Airport Operations**

Larry Hamilton  
Operations Officer  
(804) 226-8590  
lhamilton@flyrichmond.com

## **Utility and Grounds**

Jeremy Niles  
Grounds Foreman  
(804) 226-8541  
jniles@flyrichmond.com

This report is due by the 3<sup>rd</sup> of the following month. **You will need a login to the Aerosimple platform to complete the report.** Contact RIC Airport Operations if you require a login credential.

The link is also available on the RIC AirPortal.

<https://ricairportal.com>



**AEROSIMPLE** Forms

Forms Form Data

**Monthly Glycol Usage Report**

[Back to Forms](#)

Richmond International Airport Monthly Deicing Report

Please select type of chemical used and enter the amount (select all that apply)

Created by  
Dereck Tingfah

Created date  
10/25/2023 03:55 PM

Airline  
▼

Reporting Month  
▼

☐ Type I  
☐ Type II  
☐ Type IV  
☐ Other Chemical Used

Cancel Save as Draft **Submit Form**



# Deicing Truck Operations



- Trucks must be maintained and monitored for leaks. Spilled glycol must be reported for clean-up.
- Trucks may not be parked under jetways or structures due to hot exhausts.
- Operators must remain alert for other vehicle and aircraft movements.
- Operators must always give way to moving aircraft.
- Operators must be authorized and trained by their companies to operate the truck or equipment they are using.
- Operators must have a valid state driver's license, and the RIC "N"on-movement endorsement.
- Clean up following deice fluid/flow testing must be coordinated with CRAC Utility and Grounds. (804) 226-8534 or (804) 226-0001



# RIC De-icing Operations Water Sources

North Air Carrier Ramp VSR



South Air Carrier Ramp VSR



Cargo Ramp VSR





# De-Icing Truck Water Supply

- The water supply to fill deice trucks on the North Air Carrier Ramp is at a hydrant near Gate W17.
- Use caution and **do not** overtighten valves when shutting off the water supply.





# De-Icing Truck Water Supply

- The water supply to fill deice trucks on the Cargo Ramp near Gate 60.
- Use caution and **do not** overtighten valves when shutting off the water supply.





# De-Icing Truck Water Supply

- The water supply to fill deice trucks on the South Air Carrier Ramp is in a potable water cabinet near Gate W15.







**Deicing operations at RIC must be carefully coordinated to ensure efficiency, and most importantly safety!**

**Airline ground crews, flight crews, and maintenance operations, Richmond Air Traffic Control, Airport Operations, and snow removal crews all play a role in a safe transition from the gate to take-off when deicing is in-progress.**



**Safety first @ RIC**



# De-Icing Operations @ RIC - SAFETY

- ✈ De-Icing at RIC must be performed in approved locations only.
- ✈ Provide flight crews with information on planned location for de-icing.
- ✈ If taxiing to an off-gate de-ice location, communicate the “DEICE SPOT” to flight crews.
- ✈ ALWAYS use aircraft marshalls and guide-persons when maneuvering aircraft in and out of DEICE SPOTS.
- ✈ Use caution for other moving aircraft and ground vehicle traffic.
- ✈ Aircraft maintenance crews taxiing aircraft from hangar to gate must ensure path to gate is clear prior to taxi.
- ✈ Refrain from blocking other air carrier operations.
- ✈ **Do not block vehicle service roads or routes.**
- ✈ **DO NOT DISPATCH AIRCRAFT UNTIL THE DEICE SPOT IS READY TO ACCEPT!**

# Airside Winter Operations Safety

- Jet blast in slippery conditions
- Vehicle movement
- Safe Driving Speeds
- Regional aircraft single engine operating during deice







**RICHMOND**  
INTERNATIONAL AIRPORT

# Airline Specific Deice Plans 2025/2026 season

American Airlines 

**allegiant**

**Breeze**

 **DELTA**

**jetBlue**  
AIRWAYS<sup>®</sup>

  
**SOUTHWEST**

**spirit**

 **sun country**  
airlines.

**UNITED** 

BERMUDA  AIR





Allegiant aircraft will push back from gates and taxi to the South Air Carrier Ramp Deice Pad, deice spots D1 and D2.

Deice spots D1 and D2 are used by multiple airlines on a first come, first serve basis.

DEICE VENDOR -  
Million Air  
DEICE FREQUENCY –  
130.3



Please orient aircraft nose north whenever possible.





**SPOT D5**

**Deicing on Taxiway Alpha is prohibited!**

**TAXIWAY ALPHA**

**American Airlines**

**Gate A16**

A16

A14

A12

A10

A8

A6

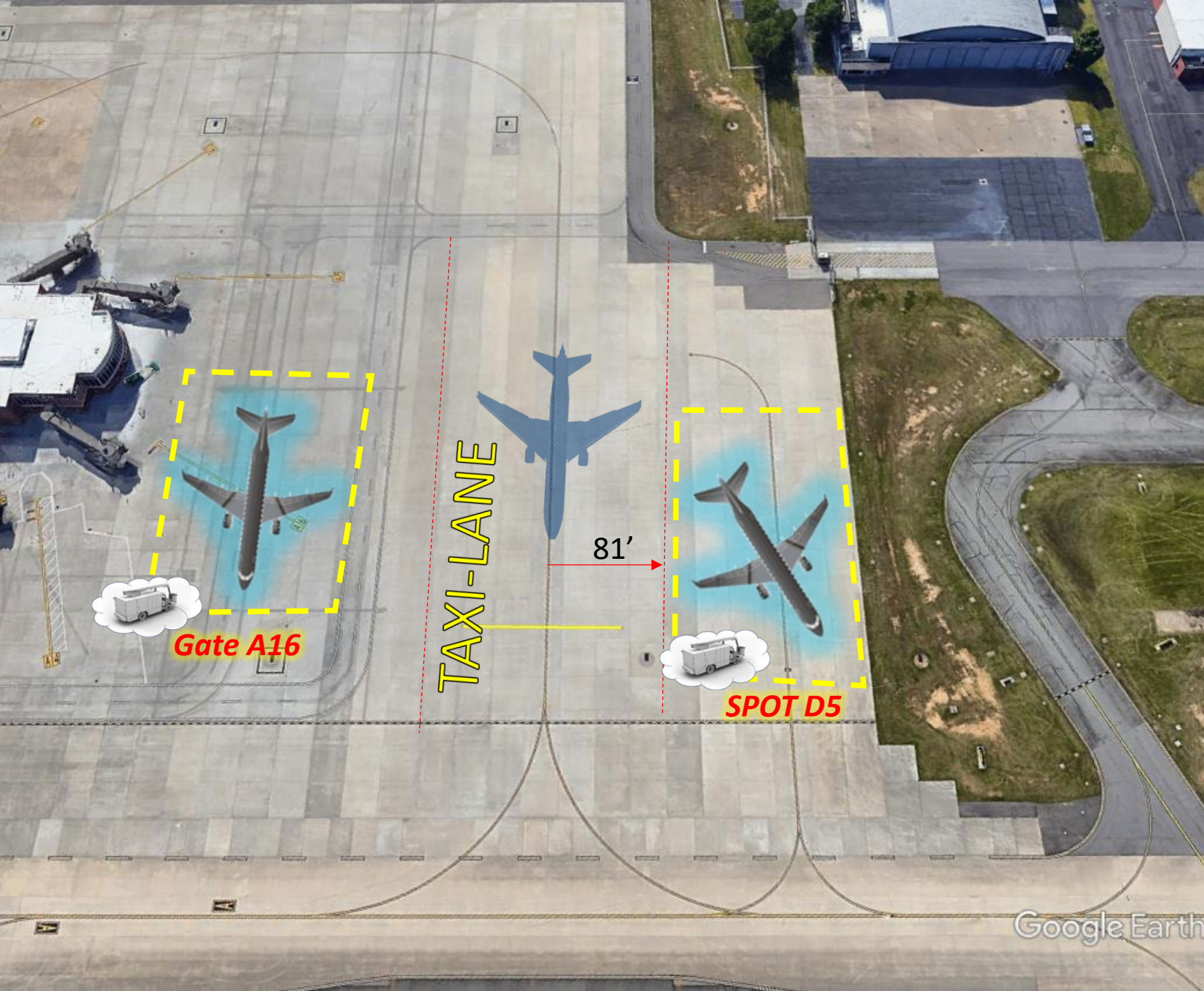
**TAXI-LANE**

American mainline and regional jet aircraft will deice at either of two designated locations on the north end of the Air Carrier Ramp, spots D5-EAST or Gate A16. Aircraft pushing from Gates A6, 8, 10, 12, 14 taxi to one of the designated deice spots.

**DEICING OPERATIONS MAY NOT BLOCK ACCESS TO AND FROM GATES A1, A3, A5, A11, A13, or A15.**

**DEICING VENDOR – Piedmont**

**DEICING FREQUENCY – 129.325**



It is imperative that the taxilane that provides access to Gates A1, A3, A5, A11, A13 and A15 remain clear for Design Group III aircraft up to 118' wingspan to taxi. This includes Boeing 737, Airbus A220, and Airbus A320.

**Aircraft that are being deiced at Spot D5 must be at least 81 feet from the taxilane centerline.**





Breeze aircraft will deice on gates or be directed to East Ramp 1 by the "Iceman" (deice service provider) when appropriate.

DEICE VENDOR -  
Aero Industries  
DEICE FREQUENCY –  
131.425







Delta mainline and regional jets will push back from gates and taxi to the South Air Carrier Ramp Deice Pad, deice spots D1 and D2.

Deice spots D1 and D2 are used by multiple airlines on a first come, first serve basis.

DEICE VENDOR -  
Unifi  
DEICE FREQUENCY –  
131.450



Please orient aircraft nose north whenever possible.





Frontier aircraft will deice on gates or be directed to East Ramp 1 by the "Iceman" (deice service provider) when appropriate.

DEICE VENDOR -  
Aero Industries  
DEICE FREQUENCY –  
131.425





# jetBlue®

← TAXIWAY ALPHA →

Deicing on Taxiway Alpha is prohibited!

AM 05:00 TO AM 08:00

VEHICLE SERVICE ROAD

VEHICLE SERVICE ROAD

A4

JetBlue aircraft parked at Gates A4 will be pushed back to the asphalt area of the ramp. Deice operations must not impede vehicle traffic on the service road. **The aircraft must be pushed back in a manner that it does not block arrivals or departures at Gates A6, B1, B3 or B5.**

DEICE VENDOR – Aero Industries

DEICE FREQUENCY – 131.425

Google Earth





jetBlue aircraft will deice on gates or be directed to East Ramp 1 by the “Iceman” (deice service provider) when appropriate.

DEICE VENDOR -  
Aero Industries  
DEICE FREQUENCY –  
131.425





← TAXIWAY ALPHA →

Deicing on Taxiway Alpha is prohibited!



VEHICLE SERVICE ROAD



B7



B9

B5

B3

AM 05:00 ↑ AM 08:00 ↑  
PM TO

Southwest aircraft using Gate B9 and B7 will deice at the gate. Aircraft may be pushed back 10 to 20 feet from parked position for deicing. The vehicle service road must not be blocked. Deicing on Taxiway Alpha is prohibited!  
DEICING VENDOR - Aero Industries DEICING FREQUENCY -131.425

le Earth



Southwest aircraft will deice on gates or be directed to East Ramp 1 by the "Iceman" (deice service provider) when appropriate.

DEICE VENDOR -  
Aero Industries  
DEICE FREQUENCY –  
131.425





# ***spirit***<sup>®</sup>

Spirit aircraft will deice on gates or be directed to East Ramp 1 by the “Iceman” (deice service provider) when appropriate.

DEICE VENDOR -  
Aero Industries  
DEICE FREQUENCY –  
131.425



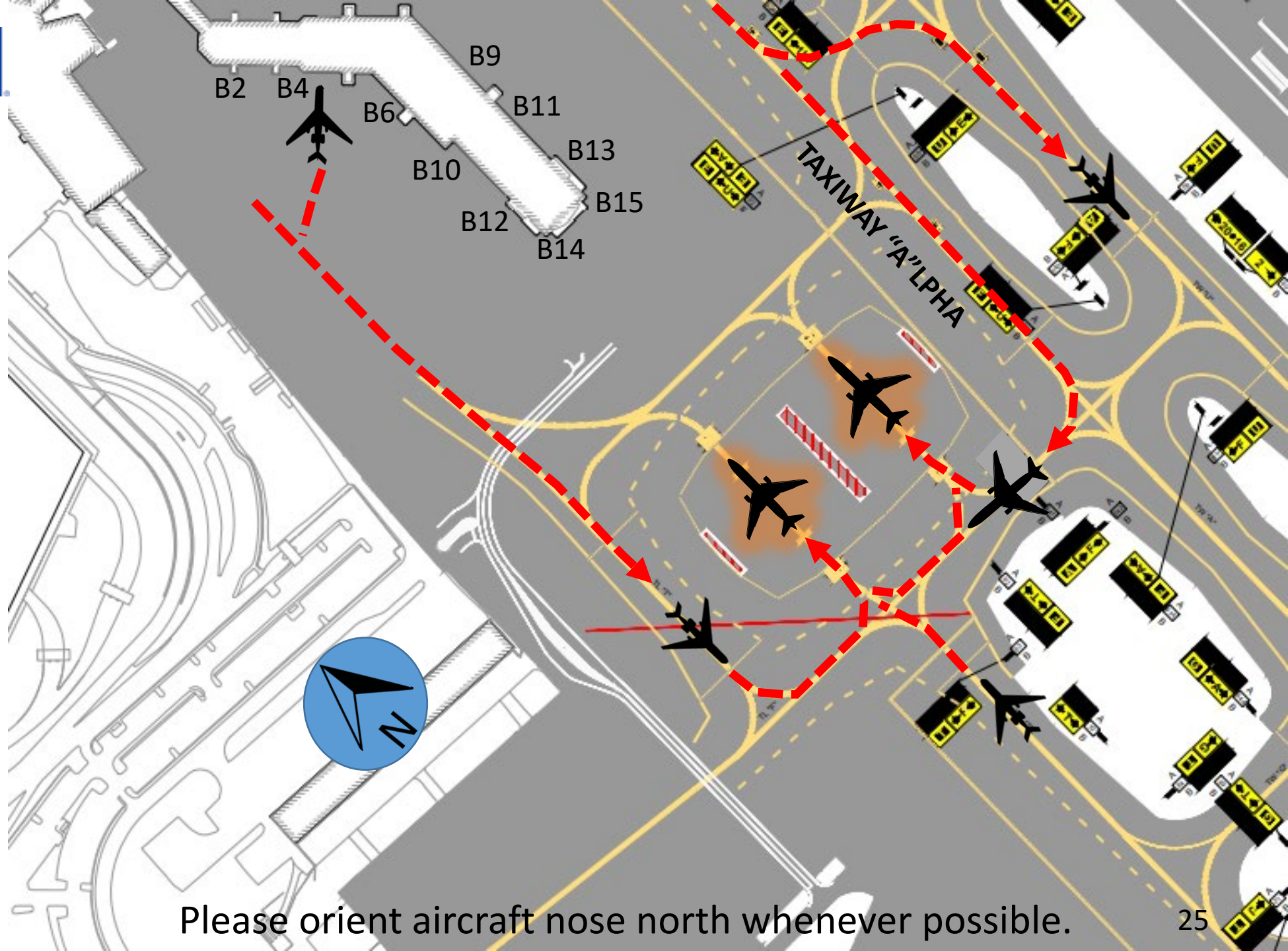




United mainline and regional jets will push back from gates and taxi to the South Air Carrier Ramp Deice Pad, deice spots D1 and D2.

Deice spots D1 and D2 are used by multiple airlines on a first come, first serve basis.

DEICE VENDOR -  
UGE  
DEICE FREQUENCY –  
130.175



Please orient aircraft nose north whenever possible.

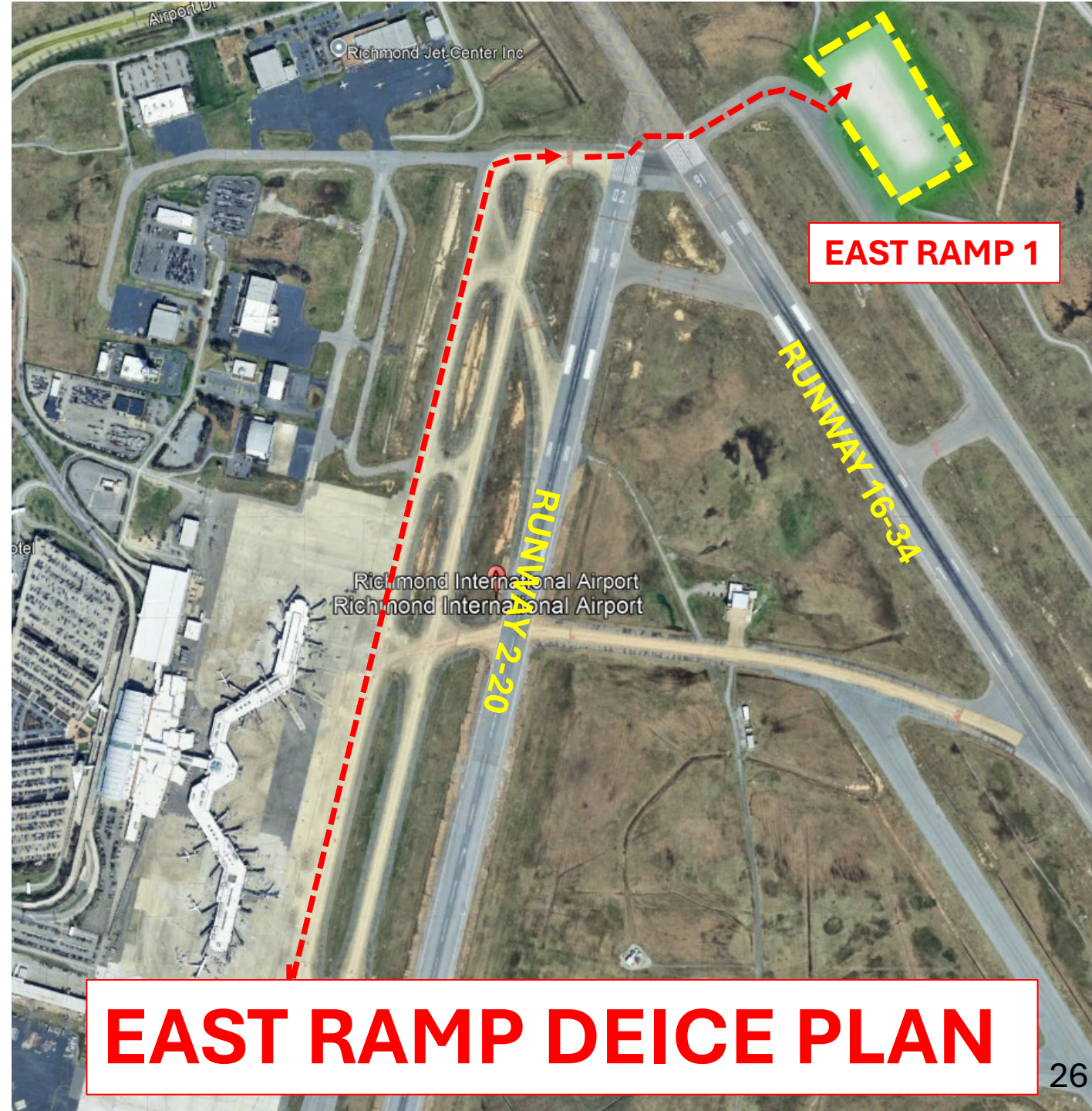


**During active winter precipitation, East Ramp 1 will be used as an alternative deice location for air carrier aircraft.**

**The deice vendor “Iceman” will initiate use of the ramp, and make the following notifications:**

- **Local station management and/or operations of affected airlines.**
- **RIC Airport Operations Duty Officer**

**RIC Airport Operations will then notify RIC Air Traffic Control, advising which air carriers should be directed to East Ramp 1 for deicing.**



**EAST RAMP DEICE PLAN**



# East Ramp 1 Deice Pad



AIRLINES SERVICED BY  
RIC JET:

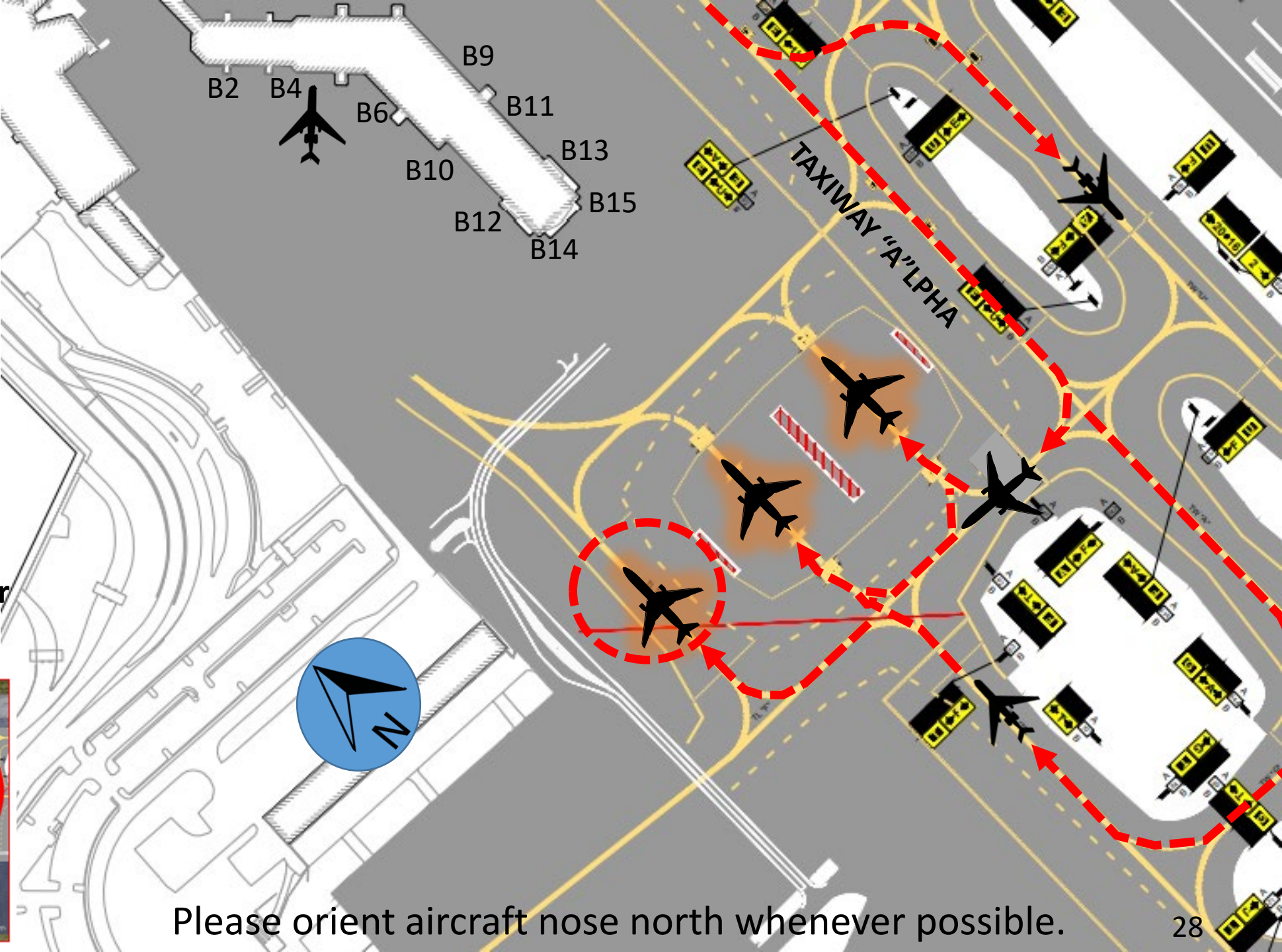
- Breeze
- Frontier
- jetBlue
- Southwest
- Spirit



A 3<sup>rd</sup> deicing stand will be made available at the discretion of Airport Operations to increase throughput when required.

**NOTE: DEICING IN THIS LOCATION IS PROHIBITED WITHOUT THE APPROVAL OF AIRPORT OPERATIONS!**

Drain inlets must be protected prior to the start of any deicing operations or application.



Please orient aircraft nose north whenever possible.



# Deice vendor contacts

## 2025-2026

AIRLINE - GROUND HANDLER	OPERATIONS PHONE CONTACT	Radio Frequency	PRIMARY DEICE VENDOR	PHONE NUMBER	BACK-UP DEICE VENDOR	PHONE NUMBER
AMERICAN AIRLINES - PIEDMONT	804-614-3730	129.325 MHz	PIEDMONT	804-614-3730	AERO INDUSTRIES	804-222-7211
ALLEGiant AIR - TREGO-DUGAN	702-830-5897	130.3 MHz	MILLION AIR	804-222-3700	N/A	N/A
BREEZE AIRWAYS TREGO-DUGAN		131.425 MHz	AERO INDUSTRIES	804-222-7211	N/A	N/A
DELTA AIRLINES - UNIFI	804-236-2140	131.450 MHz	UNIFI	804-236-2140	N/A	N/A
JETBLUE AIRWAYS – GAT	804-222-3621	131.425 MHz	AERO INDUSTRIES	804-222-7211	N/A	N/A
SPIRIT AIRLINES GAT	804-404-9422	131.425 MHz	AERO INDUSTRIES	804-222-7211	N/A	N/A
FONTIER AIRLINES - GAT		131.425 MHz	AERO INDUSTRIES	804-222-7211	N/A	N/A
SOUTHWEST AIRLINES- GAT	804-663-5065	131.425 MHz	AERO INDUSTRIES	804-222-7211	N/A	N/A
SUN COUNTRY GAT						
UNITED AIRLINES –	804-484-1727	130.175 MHz	UNITED GROUND	804-484-1727	On-Call Aviation	N/A