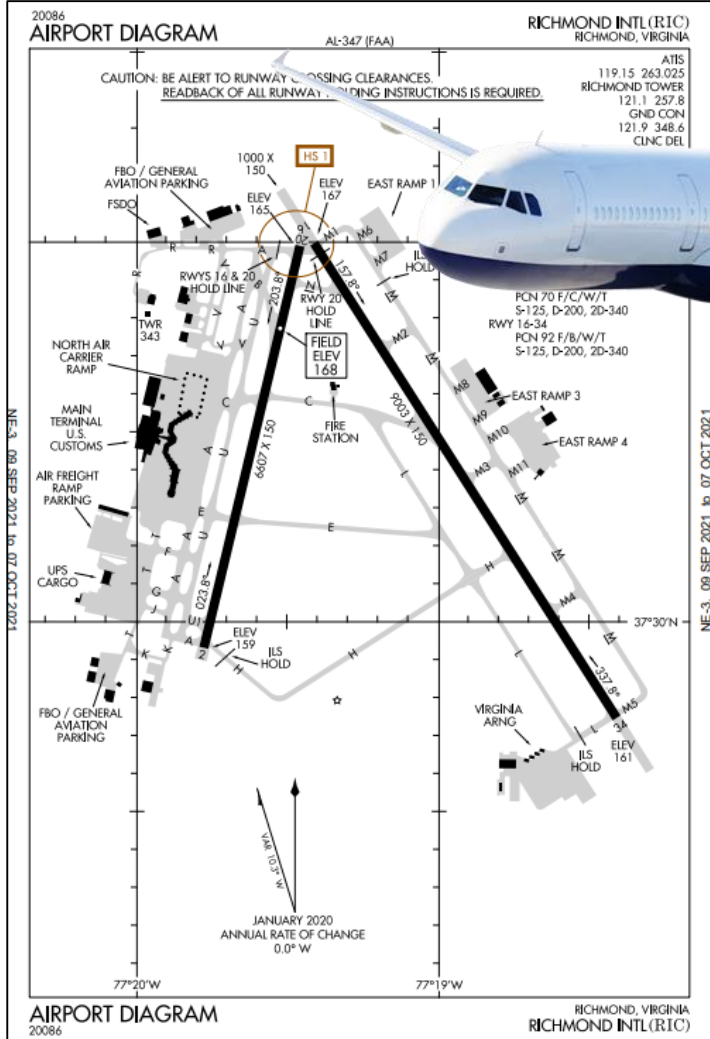


KRIC MAINTENANCE CLOSURE SCHEDULE - 2024



RICHMOND
INTERNATIONAL AIRPORT



RIC Airport Operations
O: 804-226-8590
C: 804-221-6694

Website:
www.ricairport.com

Richmond International Airport (KRIC) closes Runways 16/34 & 2/20 on a monthly schedule in order to perform preventive maintenance activities like grass cutting, and pavement and electrical system maintenance and repairs. Runway closures are typically scheduled to start at 08:00 am with re-opening at 12:00 pm. This schedule is subject to change due to weather or the scope of work that needs to be accomplished. RIC Airport Operations will send updates regarding any deviations from the published schedule. Runway 16/34 closes on the second Tuesday of each month with Runway 2/20 closing on the fourth Tuesday unless otherwise **noted.

Notice to Air Missions (NOTAMS) detailing these closures will be published 5-7 days prior to the closure date.

Month	Runway 16/34 (9003')	Runway 2/20 (6607')
January	TUE, JAN 9	TUE, JAN 23
February	TUE, FEB 13	TUE, FEB 27
March	TUE, MAR 12	TUE, MAR 26
April	TUE, APR 9	TUE, APR 23
May	TUE, MAY 14	TUE, MAY 28
June	TUE, JUN 11	TUE, JUN 25
July	TUE, JUL 9	TUE, JUL 23
August	TUE, AUG 13	TUE, AUG 27
September	TUE, SEP 10	TUE, SEP 24
October	TUE, OCT 8	TUE, OCT 22
November	TUE, NOV 12	TUE, NOV 26
December	TUE, DEC 10	**TUE, DEC 17