

Appendix E – Gate Lease Status and Hardstand Parking Information

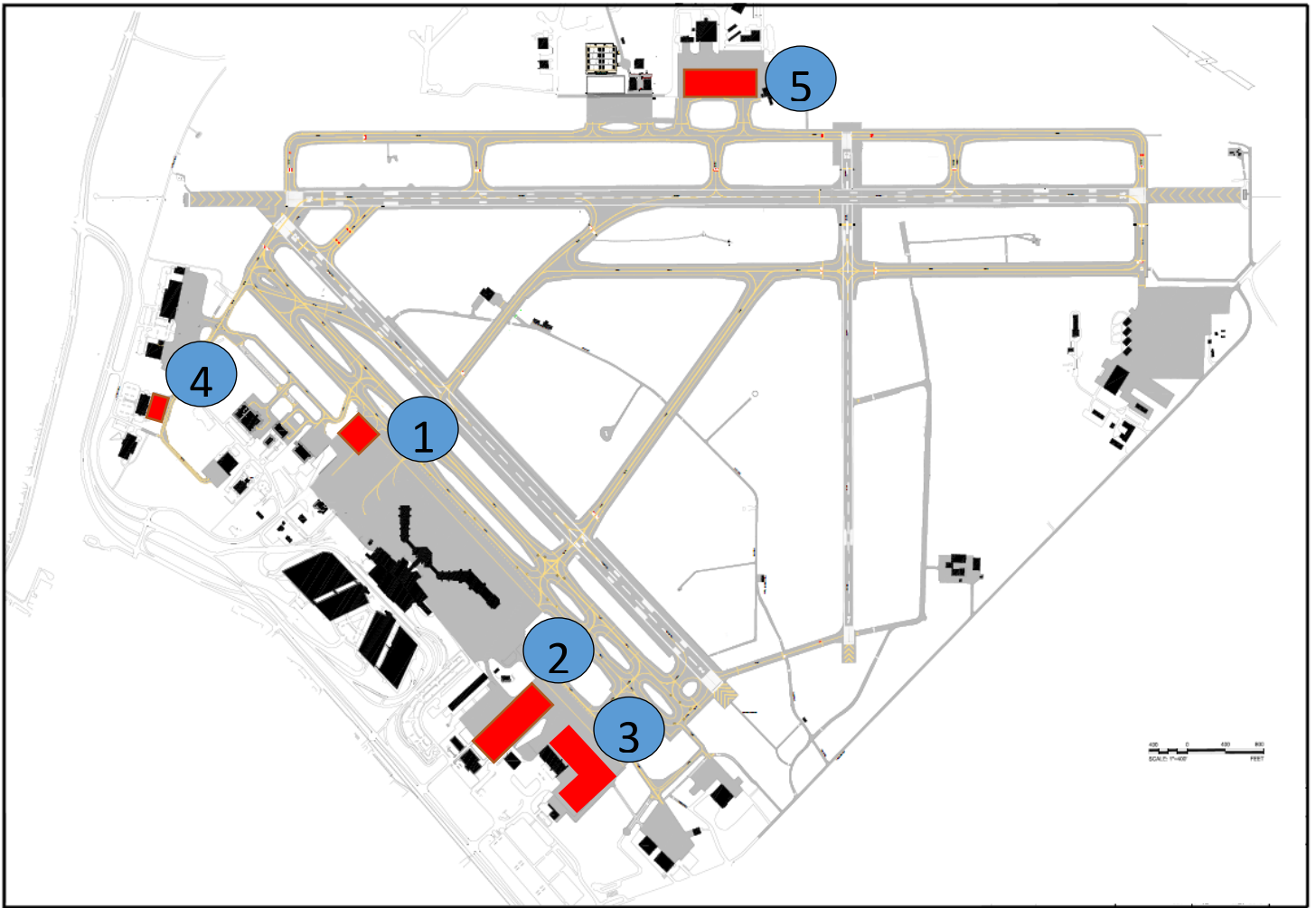
RIC LEASED GATES AND RON PARKING – UPDATED 5/8/19*

<u>A CONOURSE</u>				
Gate Number	Leased to	Hours	Max. Wingspan ¹	Typical user
A-1	American	Continuous ⁴	Group IV: 171 ft.	CRJ7 (76ft.)
A-2	JetBlue American ⁴	DAY 07:00 - 19:00 RON 19:00 - 07:00	Group III: 118 ft.	E190 (94ft.)
A-3	American	Continuous	Group III: 118 ft.	CRJ7 (76ft.)
A-4	JetBlue	Continuous	Group III: 118 ft.	A320 (118ft.)
A-5	American	Continuous	Group III: 118 ft.	E175 (85ft.)
A-6	American	Continuous	Group IV: 171 ft.	B737 (118ft.)
A-7	American	Continuous	Group III: 118 ft.	CRJ9 (82ft.)
A-8	American	Continuous	Group IV: 171 ft.	A320 (118ft.)
<u>B CONOURSE</u>				
Gate Number	Leased to	Hours	Max. Wingspan ¹	
B-1	United	Continuous	Group IV: 171 ft.	E145 (66ft.)
B-2	United	RON 19:00 - 07:00	Group III: 118 ft.	E135 (66ft.)
B-3	United	Continuous	Group IV: 171 ft.	A320 (118ft.)
B-4	United	Continuous	Group IV: 171 ft.	E175 (85ft.)
B-5	Allegiant Delta	Per use, varies RON 19:00 - 07:00	Group III: 118 ft.	A320 (118ft.) CRJ7 (76ft.)
B-6	Delta	RON 19:00 - 07:00	Group III: 118 ft.	CRJ2 (70ft.)
B-7	Spirit United	Continuous RON 19:00 - 07:00	Group III: 118 ft.	A319 (118ft.)
B-9	Southwest	Continuous	Group III: 118 ft.	B737 (118ft.)
B-10	Delta	Continuous	Group IV: 171 ft.	CRJ7 (76ft.)
B-11	Delta	RON 19:00 - 07:00	Group III: 118 ft.	B737 (118ft.)
B-12	Delta	Continuous	Group III: 118 ft.	CRJ7 (76ft.)
B-13	Delta	Continuous	Group IV: 171 ft.	MD88 (108ft.)
B-14	Delta	Continuous	Group IV: 171 ft. ²	B757 (125ft.)
B-15	CRAC		Group V: 214 ft. ³	B777 (200ft.)

***Subject to change.**

1. Some gates may accommodate larger aircraft if adjacent gates are unoccupied.
2. Only when aircraft is parked in a North/South configuration. (B14A)
3. Only when adjacent gates are occupied by Group III or smaller. Otherwise, assume Group IV.
4. Special condition for construction.

IROPS PARKING LOCATIONS – Non-movement area



1. **Air Carrier ramp.** — single space available
2. **North Cargo ramp.** — spaces available dependent on current lease agreements
3. **South Cargo ramp.** — spaces available dependent on current lease agreements
4. **FSDO ramp.** — can only accommodate GA and small regional aircraft
5. **East ramp #4.** — requires prior coordination with current lease holder

APPENDIX B2 - RICHMOND INTERNATIONAL AIRPORT
AIR CARRIER RAMP PARKING - SEE FIGURE 1

SPOT	AIRCRAFT GROUP SIZE	SPECIAL NOTES
D5	Group III: 118 ft.	May accommodate two small regional jets parked nose to tail.

CARGO RAMP PARKING – SEE FIGURE 2 & 3

SPOT	AIRCRAFT GROUP SIZE	SPECIAL NOTES
C1	N/A	FEDEX GSE LEASE
C2	N/A	FEDEX GSE LEASE
C3	N/A	Pavement not suitable for aircraft operations.
C4	Group III: 118 ft.	May support larger aircraft if adjacent spots vacant
C5*	Group III: 118 ft.	May support larger aircraft if adjacent spots vacant
C6*	Group III: 118 ft.	May support larger aircraft if adjacent spots vacant
C7	Group IV: 171 ft.	
C8	IN USE AS TAXILANE	TAXILANE for Hangar
C9	Group IV: 171 ft.	FEDEX LEASE HOLD
C10	Group IV: 171 ft.	FEDEX LEASE HOLD
C11	Group III: 118 ft.	FEDEX LEASE HOLD
C12	Group IV: 171 ft.	UPS LEASE HOLD
C13	Group IV: 171 ft.	UPS LEASE HOLD
C14	Group IV: 171 ft.	UPS LEASE HOLD

GREEN highlights indicate possible use for irregular ops (check for conditions)

*indicates Delta leased RON parking

APPENDIX B2 - RICHMOND INTERNATIONAL AIRPORT
FIGURE 1 – NORTH AIR CARRIER RAMP

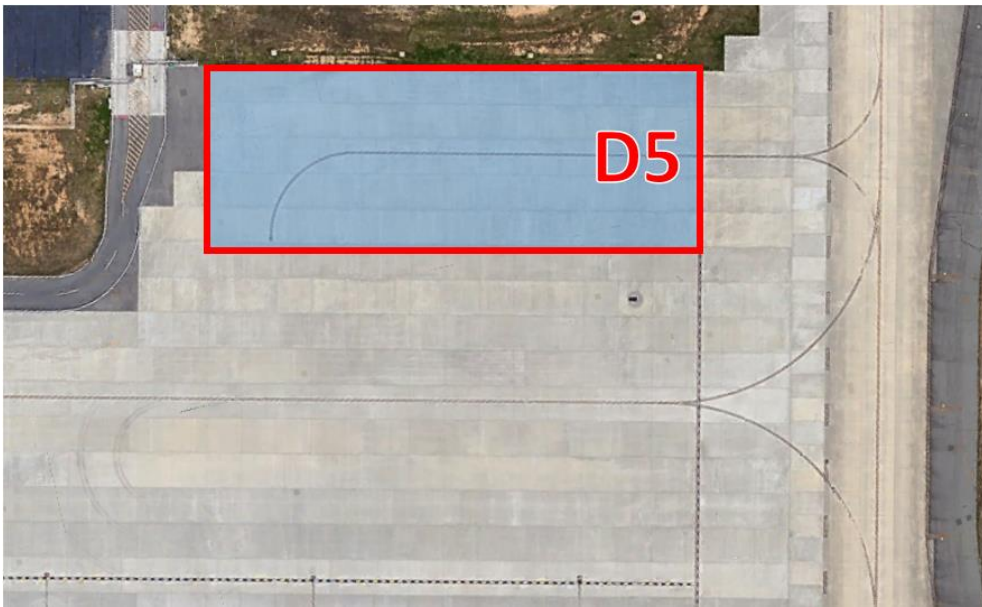
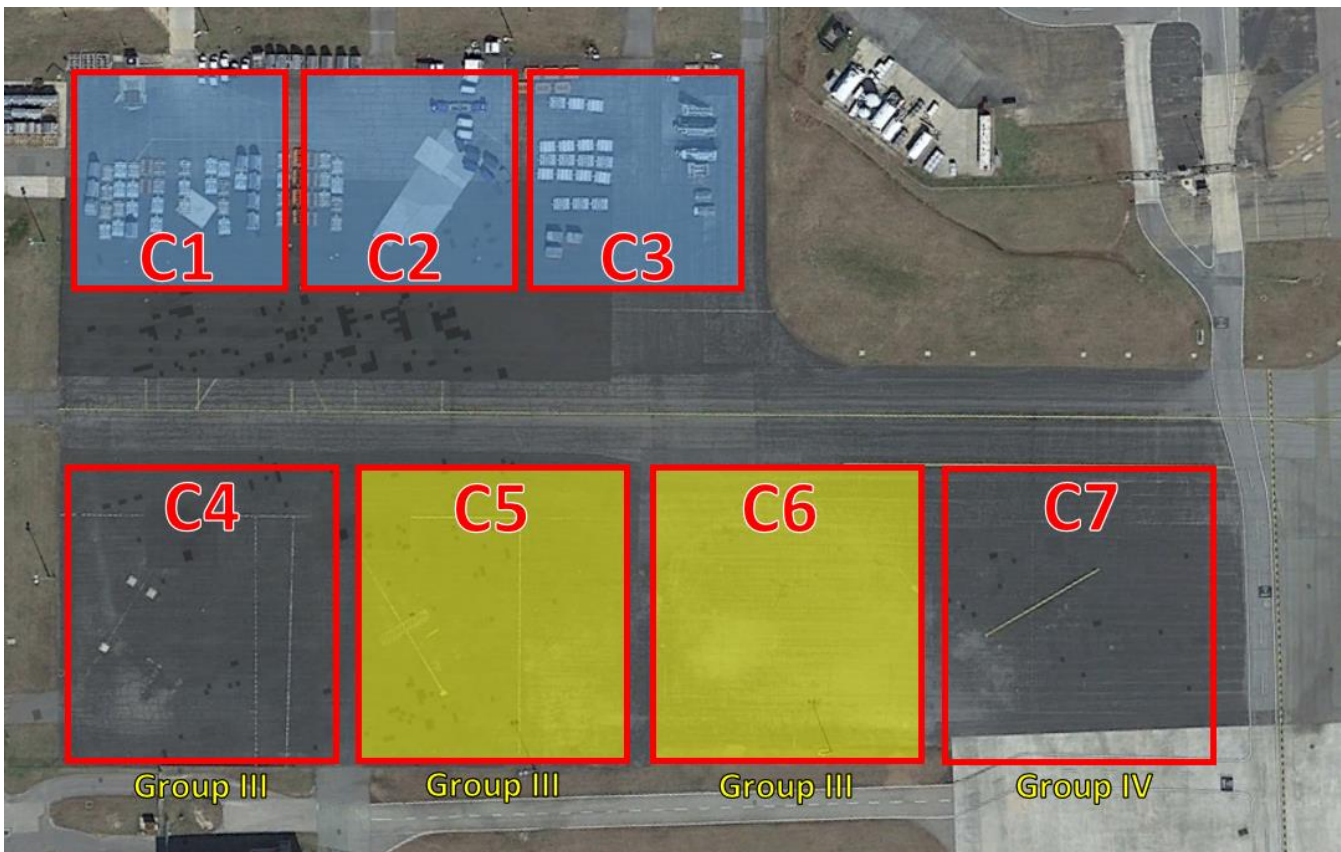
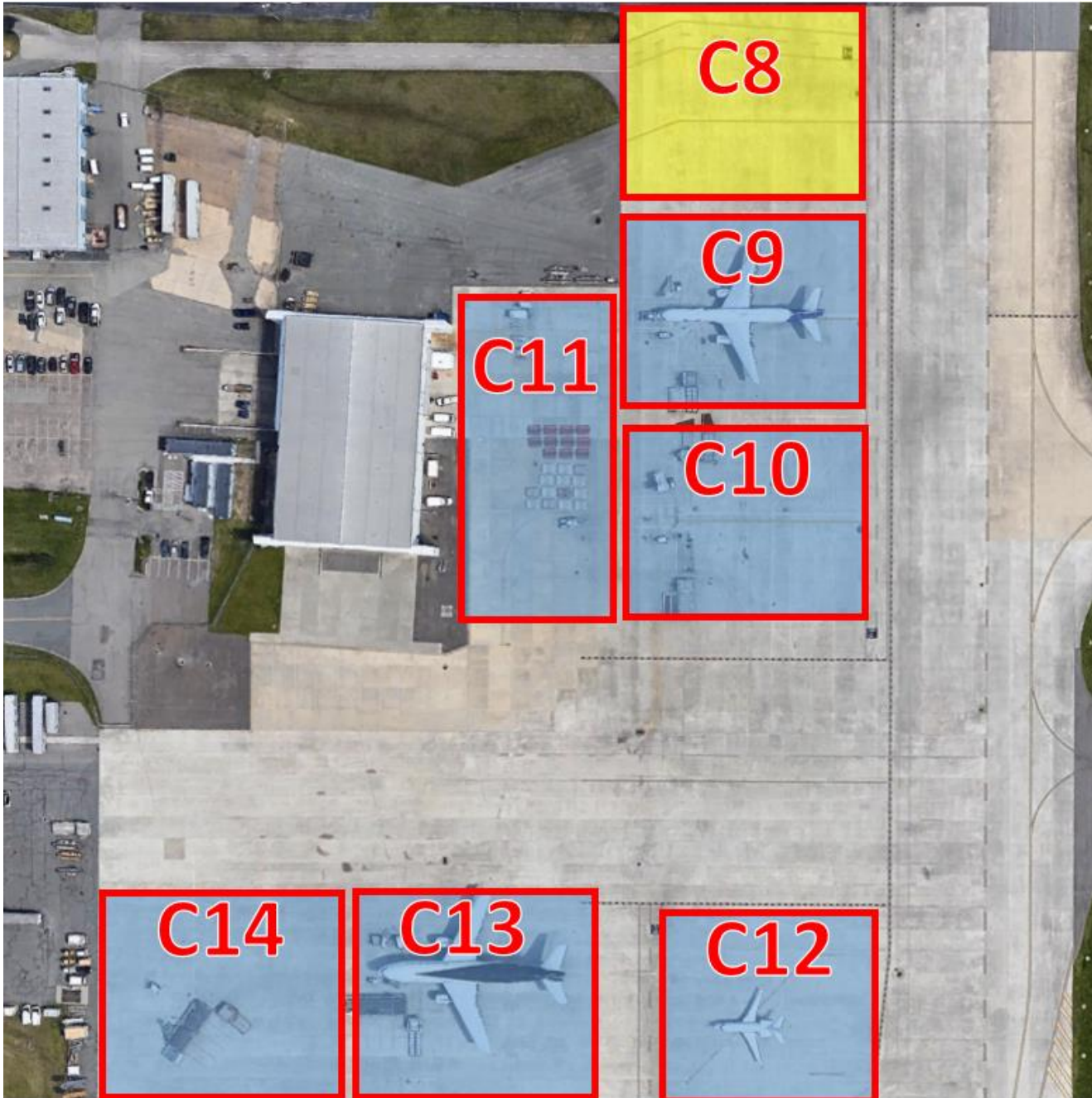


FIGURE 2 – NORTH CARGO RAMP

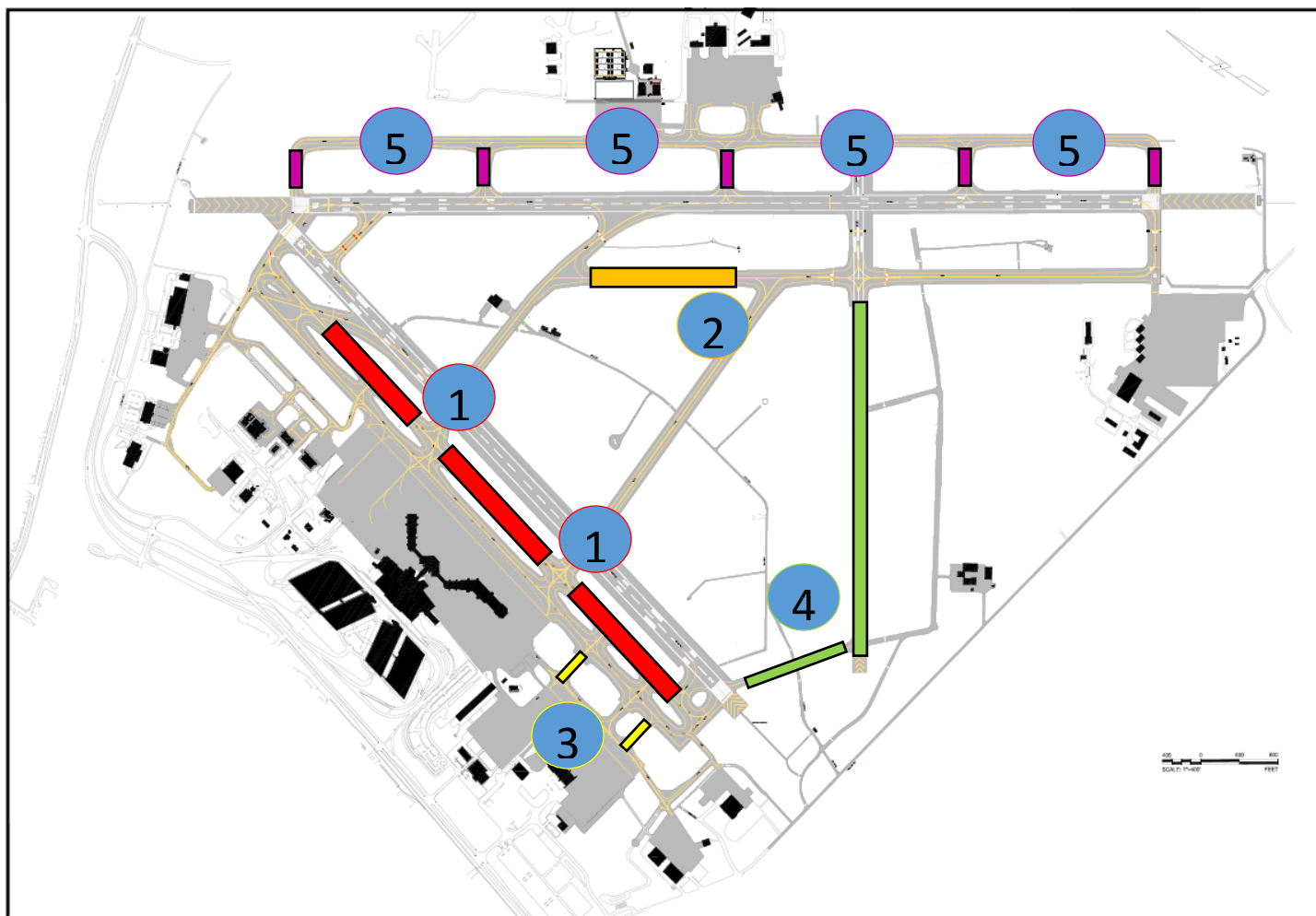


APPENDIX B2 - RICHMOND INTERNATIONAL AIRPORT
FIGURE 3 – SOUTH CARGO RAMP



IROPS PARKING LOCATIONS – Movement area*

**Parking on the movement area is at the discretion of Richmond ATCT. Availability and priority may change depending on the controller on duty, weather conditions, construction, emergencies, or several other factors. Airport Operations will work with ATCT to coordinate movement area parking on an as-needed basis.*



1. TWY U – full length, stopped short of intersecting taxiways. **Not available during SMGCS**
2. TWY L – between TWYs C and E only
3. TWYs J, F – limited to ADG III aircraft. TWYs J and F between TWYs A and T only
4. RWY 7/25 and TWY H – RWY 7/25 east of TWY L only. “Racetrack” exits required
5. TWY M, M1 - M5 – controller may use stubs, north/south between stubs, or both